

SABLAYAN WATER DISTRICT

Sablayan, Occidental Mindoro

2015 ANNUAL REPORT

FOREWORD

Sablayan Water District (SWD) was established on November 17, 1981 by virtue of Sangguniang Bayan Resolution No. 926, series of 1981. This resolution gave the Water District full control and administration of the water system from the Municipal Government in accordance with PD No. 198, as amended by PD Nos. 768 and 1479.

The Water District was non-operational from 1982 to 1989 due to the unsuccessful development of its water source. In 1989, the Water District was able to develop its water source within the compound of the Municipal Building, thus it was granted a ₱3M loan, ₱2,830,212.00 of which was availed from the Local Water Utilities Administration (LWUA). It also availed of loan packages from Local Government Unit and Provincial Government Office to boost its operations and to serve the needs of the requesting barangays.

As of December 31, 2015, the Water District has six (6) operational pumping stations serving **3,279** active concessionaires in seven (7) of the twenty-two (22) barangays of Sablayan, namely: Poblacion, Buenavista, Sto. Niño, Ligaya, San Vicente, Tuban and Ibud.

Sablayan Water District has nineteen (19) regular employees and Twenty Three (23) service of contract employees, headed by General Manager Jose M. Abeleda, Jr.

VISION

We envisioned for the upliftment of the quality of life and economic vitality of Sablayeños by providing high-quality, reasonably priced potable water and premium customer services.

MISSION

Sablayan Water District endeavors to deliver sustainable and reliable high- quality water at an affordable price through responsible stewardship. With integrity, Sablayan Water District will dedicate and ensure the economic vitality of the “heart” of Occidental Mindoro- Sablayan.

I. GENERAL

- A. ADMINISTRATIVE** (*See Annual Report- Excel Format*)
- B. FINANCIAL/COMMERCIAL** (*See Annual Report- Excel Format*)
- C. TECHNICAL** (*See Annual Report- Excel Format*)
- D. OPERATIONAL** (*See Annual Report- Excel Format*)

II. PROFILE

A. THE WATER DISTRICT AND ITS PHYSICAL SYSTEMS FACILITIES

1. ORGANIZATION

The Sablayan Water District was categorized as Category “D” Water District in compliance with the guidelines as provided for in the Department of Budget and Management (DBM) approved revised Local Water District (LWD) Manual on Categorization, Recategorization and other related matters (LWD-MaCRO). The Certificate of Category was issued by the Local Water Utilities Administration (LWUA) last March 16, 2012. At present, the District opted to have its positions below the General Manager as straight listed only.

2. EXISTING SYSTEM FACILITIES

The office lot of the District has an area of three hundred ninety eight (398) square meters located at Buenavista, Sablayan Occidental Mindoro adjacent to the Municipal Compound. Its building and warehouse floor area totaled one hundred seventy one (171) square meters. The table below shows the six (6) pump stations and one (1) reservoir with their corresponding capacities.

NAME	LOCATION	CAPACITY (lps)
1. Maugong Pump house	Buenavista, Sablayan Occ. Mindoro	19
2. Abaca Pump house	Abaca, Sto. Niño Sablayan, Occ. Mindoro	20
3. Ligaya Pump house	Ligaya, Sablayan, Occ. Mindoro	12
4. San Vicente Pump house	San Vicente, Sablayan Occ. Mindoro	10
5. Tuban Pump house	Tuban, Sablayan, Occ. Mindoro	7
6. Alipid Pump house	Tulaong, Sto. Niño Sablayan, Occ. Mindoro	20
7. Ground Concrete	Buenavista, Sablayan Occ. Mindoro	150 cu.meters

B. CURRENT OPERATIONAL/FINANCIAL HIGHLIGHTS

1. EXISTING WATER RATES

Category	Meter Size	Minimum
Residential/Gov't.	½"	208.00
Commercial (x2)	½"	416.00
Semi-Commercial-A(x1.75)	½"	364.00
Semi-Commercial-B(x1.5)	½"	312.00
Semi-Commercial-B(x1.25)	½"	260.00

2. OPERATING INCOME/EXPENSES

a) OPERATING INCOME	= Php19,973,649.89
b) EXPENSES	= Php 14,569,272.42
c) NET INCOME	= Php 5,404,377.47

3. FINANCIAL HIGHLIGHTS

a) Total Currents Assets	= Php 14,737,908.42
b) Total None-Current Assets	= Php 19,797,976.05
c) Total Current Liabilities	= Php 3,541,987.69
c) Total None-Current Liabilities	= Php 6,059,690.00
d) Total Government Equity	= Php 24,934,206.78

C. COMMUNITY ECONOMIC PROFILE

1. TOTAL POPULATION ¹	=
2. AVERAGE MONTHLY INCOME	=
3. MAJOR SOURCE OF INCOME	
a. <i>Farming</i>	
b. <i>Fishing</i>	
4. AVERAGE MONTHLY EXPENDITURES ²	
5. MUNICIPALITY REVENUE	=

¹ (Latest data available from LGU- Sablayan as of C.Y. 2010)

² No available data

6. AVERAGE RATE OF MORBIDITY

TEN LEADING CAUSES OF MORBIDITY FOR THE LAST THREE YEARS, 2010-2012

Average rate of morbidity (Water Borne Disease) ¹

2010		2011		2012	
CAUSES	NO. OF DEATHS	CAUSES	NO. OF DEATHS	Causes	NO. OF DEATHS
Acute Bronchitis	2,353	Upper Respiratory	576	Bronchial Asthma	292
Acute Nasopharyngitis	828	Bronchial Asthma	358	Upper Respiratory	288
Acute Gastritis/Dyspepsia	593	Acute Nasopharyngitis	255	Acute Bronchitis	232
Wound	485	Acute	241	Acute	184
AGE with no dehydration	481	AGE with no dehydration	159	Hypertensive Atherosclerotic Cardiovascular	140
Musculoskeletal Pain	435	Hypertensive Atherosclerotic Cardiovascular Disease	137	Musculoskeletal Pain	124
Bronchial	414	Urinary Tract	110	AGE with no	120
Hypertensive Atherosclerotic Cardiovascular Disease Not in Failure	376	Wound Infection	104	Pulmonary Tuberculosis	76
Acute Respiratory	347	Musculoskeletal Pain	102	Dyspepsia/Urinary Tract	68
Dog Bite	85	Mumps	66	Dog Bite	64

Source: Municipal Health Office

¹ No available data

7. AVERAGE RATE OF MORTALITY

TEN LEADING CAUSES OF MORTALITY FOR THE LAST THREE YEARS, 2010-2012

Average rate of mortality (Water Borne Disease) ¹

2010		2011		2012	
CAUSES	NO. OF CASES	CAUSES	NO. OF CASES	CAUSES	NO. OF CASES
Cardio Vascular Arrest	28	Electrolyte Imbalance	32	Cardiorespiratory Arrest	84
Senility	12	Cardiac Arrest	21	Senility	51
TB of the Lungs	12	Pulmonary Tuberculosis	20	Cardiopulmonary Arrest	22
Cardio Vascular Accident	11	Gunshot wound, Multiple	11	Sequelae of Stroke	20
Pneumonia	7	Stroke	8	Tuberculosis of	19
Sudden Cardiac	7	Pneumonia	8	Pneumonia	17
Hypertensive Heart Disease	6	Chronic Obstructed	7	Hypertensive Heart Disease	16
Gunshot Wound, Multiple	6	Sepsis	6	Sudden Cardiac Death	14
Cardiac Arrythmia	5	Hypertensive Heart Disease	5	Chronic Obstructed	8
Sequelae of Stroke	4	Glioblastoma Multiform	5	Drowning/ DMI Type II	5

8. MAJOR AGRICULTURAL, COMMERCIAL AND INDUSTRIAL ACTIVITIES

A. AGRICULTURAL

Sablayan is traditionally an agriculture surplus area. It supplies the consumption requirements of neighboring Visayan Region and Metro Manila. The Province of Occidental Mindoro is one of the island resource sub-region of the Southern Tagalog Region.

¹ No available data

A.1 Agricultural Production and Land Utilization by Type

A total of 14,032 hectares of agricultural lands in the municipality is devoted to rice production. This accounts to 73.69 percent of the total agricultural area of the municipality (Table a.1.1). Areas provided irrigation cover 6,996 hectares while the remaining 7,036 hectares remain unirrigated. Irrigation facilities in the municipality are provided by the National Irrigation Administration (NIA), Department of Agriculture (DA), and LGU-Sablayan. Areas serviced by the National Irrigation Administration (NIA) accounts to 1,417 hectares.

a.1 Crop Production and Land Utilization by Type

There are three major crops produced in the municipality which are rice, corn and banana. The average rice production for the year 2013 was placed at 6.49 metric tons per hectare. On the other hand, the average yields for corn and banana account to 6.17 and 27.57 metric tons per hectare. Table a.1.1 would show crop production data and the product market for the year 2013.

Rice producing barangays are Burgos, Claudio Salgado, Ibud, Ilvita, Lagnas, Ligaya, Paetan, Pag-asa, San Francisco, San Vicente, Tagumpay, and Victoria. Barangays Batong-buhay, San Nicolas, Tagumpay and Paetan are known for corn. Other produce are vegetables, rootcrops, perennial trees and other cash crops.

Coconut is a diminishing variety of high value crop. There is no record of production and area planted to coconut. Among the barangays that still have coconut plantations are Buenavista, Burgos, General Emilio Aguinaldo, Poblacion, Santa Lucia., and Santo Niño.

An estimated 30 percent of rice and two percent of corn production are used for local consumption. Surplus products are marketed to Manila, CALABARZON and the Visayas.

Table a.1.1

EXISTING MAJOR AGRICULTURAL CROPS BY AREA, PRODUCTION AND MARKET, 2013

Municipality of Sablayan

MAJOR CROPS	AREA		PRODUCTION		PRODUCT MARKET	
	Hectares	% total	Volume (MT)	Value	Local	Export/Other Areas
1. RICE						
- Irrigated	6,996.00	36.74	34,339.0	17.40/kg	Sablayan	Metro Manila, CALABARZON, Iloilo
- Rainfed	7,036.00	36.95	28,403.6	17.40/kg	Sablayan	
2. CORN			43,425.0		Sablayan	
3. BANANA	4,751.00	24.95	130,977.0	5.00/kg	Sablayan	
1. OTHERS	259.97	1.36				
TOTAL	19,042.97	100.0				

Source: Office of the Municipal Agriculturist

Comparative agricultural crop areas and production for the years 2012 and 2013 are shown in Table a.1.2. The minimal increases in agricultural production areas and the volume of production were brought about by the provision of support infrastructure that require lands such as roads and drying pavements, and growing washed out agricultural lands as a result of rapid velocity of river flows during wet season.

Table a.1.2.
COMPARATIVE AGRICULTURAL CROP AREAS AND PRODUCTION, 2012-2013
Municipality of Sablayan

MAJOR CROPS	AREA			VOLUME OF PRODUCTION		
	2012	2013	Increase/Decrease	2012	2013	Increase/Decrease
RICE	14,026.0	14,032	Increase	58,286.36	62,742.6	Increase
CORN	6,505.0	6,936.5	Increase	40,331.0	45,780.9	Increase
BANANA	3,765.0	4,851.0	Increase	82,047.0	130,977.0	Increase

Source: Office of the Municipal Agriculturist

Major and minor agricultural occupations or groups are concentrated in the rural areas with 15,085 workers whereas in the urban areas only 3,404 workers. The most number of workers are those involved in crop production posting about 5,640 persons, followed by livestock farmers with 3,600 while those involved in ornamental and other plant growers have the least number of only two. There are approximately 18,352 individuals employed in the agricultural sector. See Table a.1.3 for other information.

Table a.1.3
MAJOR AND MINOR AGRICULTURAL OCCUPATIONS/GROUPS IN URBAN AND RURAL AREAS, 2013
Municipality of Sablayan

MAJOR AND MINOR OCCUPATION GROUPS	LOCATION	URBAN	RURAL	TOTAL
FARMERS	22 Barangays	87		
Crop Farmers	22 Barangays	127	5,640	5,767
Orchard Farmers	22 Barangays	13	800	813
Ornamental and Other Plant Growers		2	200	202
Livestock Farmers	22 Barangays	139	3,600	3,739
Dairy Farmers	22 Barangays		3,245	3,511
Poultry Farmers	22 Barangays	266		
Other Animal Producers		14	150	164
FARMWORKERS		50		
FISHERMEN				
Aqua-Farm Cultivators		2,090	1,320	3,410
Inland and Coastal Waters Fishermen		616	130	746
Deep Sea Fishermen				
Other farm workers				
TOTAL		3,404	15,085	18,352

Source: Office of the Municipal Agriculturist

B. COMMERCIAL AND TRADE

b.1 Inventory and Distribution of Commercial Establishment by Type

Sablayan comprises 22 barangays. Of the 22 barangays, seven (7) barangays have established commercial areas and these are Batong Buhay, Buenavista, Ligaya, Poblacion, San Agustin, San Vicente, and Santo Niño. Buenavista has the largest commercial area, with a total of 4.4221 hectares in 2011, followed by Santo Niño with 2.8142 hectares. This is not surprising considering that these two barangays are classified as urban barangays. There is a noticeable 1.80 percent decrease in commercial area within barangay Buenavista for the year 2011 to 2012. This is attributed to

population migration from the barangays to the town proper, where commercial areas are developed into residential and institutional use.

Table b.1.1
HISTORICAL DATA ON COMMERCIAL AREAS
Municipality of Sablayan

LOCATION	COMMERCIAL AREAS IN HECTARES		% INCREASE/ DECREASE
	2011	2012	
BATONG BUHAY	1.0704	1.0704	same
BUENAVISTA	4.4241	4.3462	1.8% Decrease
LIGAYA	0.0626	0.0626	same
POBLACION	0.3568	0.3568	same
SAN AGUSTIN	0.1727	0.1727	same
SAN VICENTE	0.3745	0.3745	same
SANTO NINO	2.8142	2.8142	same

Source: EEIPO Sablayan

Business and trade establishments engaged in retail merchandising are concentrated in the town proper (Barangay Buenavista), particularly at the market site. In the town proper alone, several establishments are carrying out retail businesses such as sari-sari stores, dry goods stores, petroleum/gasoline filling stations, and marketing. Flea markets are also a common site in the town and even at the barangays.

C. INDUSTRIAL

There are eight (8) Rice Mill Establishments existing as of C.Y. 2013 based on Socio Economic Profile.

D. OTHER INFORMATION

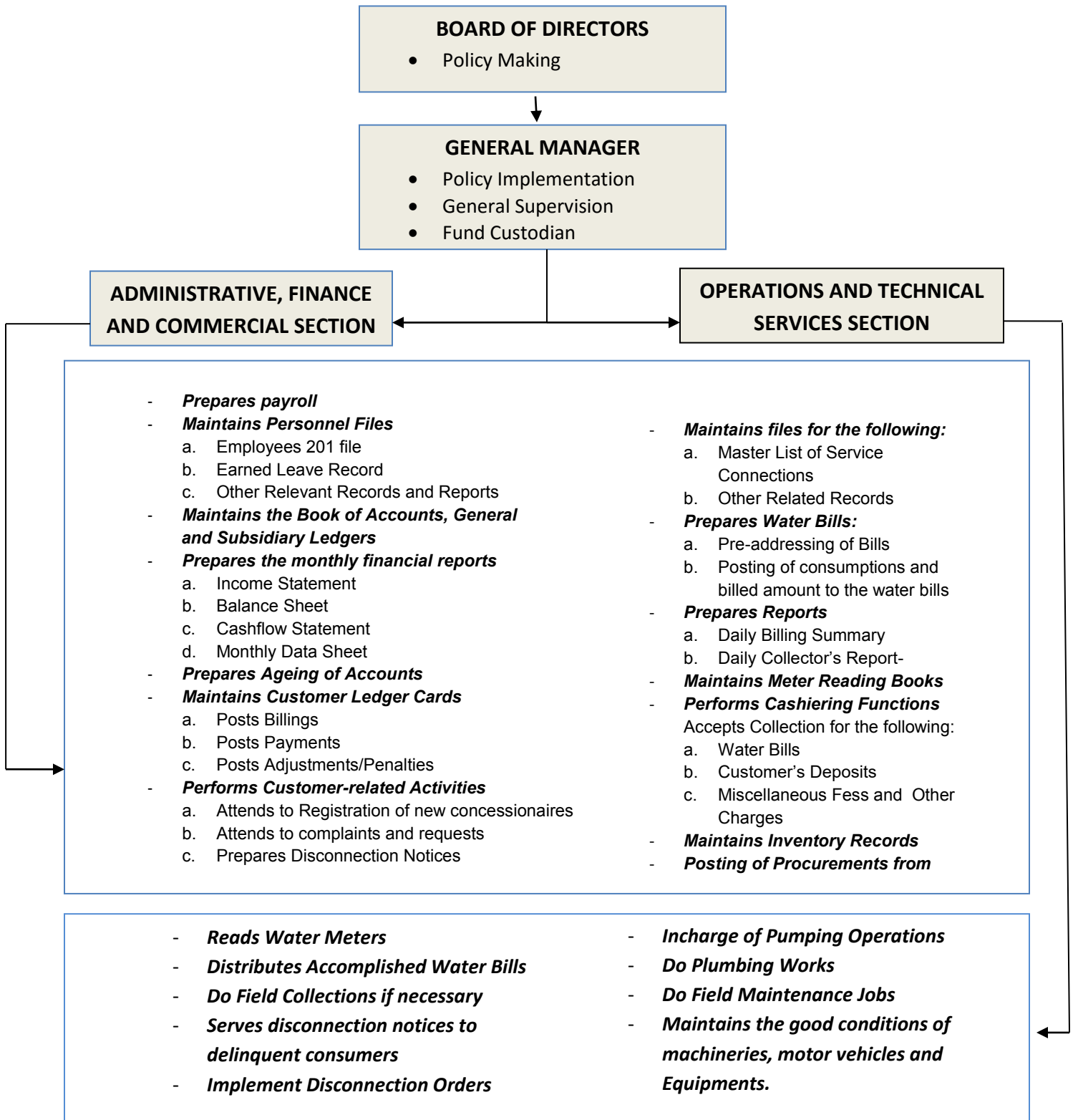
As of December 31, 2015 there were five (5) waterless barangays and one (1) Home Owners Association requesting for the services of the District enumerated below:

BARANGAY	NO. OF BENEFICIARIES (HH)
1.) Tagumpay	373
2.) Emilio Aguinaldo	445
3.) Sta. Lucia II	434
4.) San Francisco	599
5.) Ilvita	655
6.) Punta Lucia Home Owners Association	130

Management has started developing the water sources of the above five waterless barangays.

III. ANNEXES

A. FUNCTIONAL CHART



C. LIST OF PLANTILLA PERSONNEL

NAME	POSITION	SALARY GRADE/STEP
JOSE M. ABELEDA, JR.	General Manager D	24/2
MARLYN E. CADAPAN	Administrative Services Chief C	18/2
HERNANDO O. MATEO	Water/Sewerage Maint. Foreman	14/2
PLACIDO M. LAUDENCIA, JR.	Water Res. Fac. Operator B	6/2
ALFREDO P. DACULA	Utilities/Customer Services Asst. D	6/2
TONI ROSE D. BOLARIO	Sr. Accounting Processor B	10/2
DOROTHY P. PAGARIGAN	Administration Services Asst. B	10/2
EXOR B. ALIM	Utilities/Customer Services Asst. D	6/2
JOEY C. MATEO	Water Res. Fac. Operator B	6/2
MARICEL C. COSME	Administration Services Asst. C	8/2
ADELINA L. MAGNO	Storekeeper C	6/2
FELICIANO T. MERCADER III	Water Res. Fac. Operator B	6/2
REYNALD H. ANI	Water Res. Fac. Tender B	4/2
RICKY N. URIETA	Water Res. Fac. Tender B	4/2
BERNARD D. DE JESUS	Water Res. Fac. Tender B	4/2
SHARON P. ESTACION	Administrative Services Aide	4/2
MICHAEL U. QUINATADCAN	Administration Services Asst. B	10/1
EDWIN C. DANGUPON	Water Res. Fac. Tender B	4/1
LEO D. FABELLAR	Water Res. Fac. Tender B	4/1

D. SUMMARY OF POLICY SETTING RESOLUTIONS

DATE	SUBJECT	RESO. NO.
Jan. 29, 2015	RESOLUTION ADOPTING THE REVISED RULES ON ADMINISTRATIVE CASES IN THE CIVIL SERVICE (RRACCS) PROMULGATED ON NOVEMBER 18, 2011 BY THE CIVIL SERVICE COMMISSION	01
Feb. 12, 2015	RESOLUTION ABOLISHING THE ITEM OF SENIOR WATER/SEWERAGE MAINTENANCE MAN-A WITH SALARY GRADE (12/1) AND CREATION OF ITEM 1) ENGINEER B (12/1) AND ITEM 2) ADMINISTRATION SERVICES ASSISTANT-B (10/1) IN THE PLANTILLA OF PERSONNEL OF THE SABLAYAN WATER DISTRICT	02
Feb. 12, 2015	RESOLUTION REQUESTING THE LOCAL GOVERNMENT UNIT OF SABLAYAN, THRU ITS MAYOR, THE HONORABLE EDUARDO B. GADIANO, TO TRANSFER, DONATE AND GRANT ALL FACILITIES AND FIXED ASSETS PERFORMED AND ACCOMPLISHED IN THE UPGRADING AND EXPANSION OF THE WATER SYSTEM OF BARANGAY TUBAN, SABLAYAN, OCC. MDO.	03
Feb. 12, 2015	RESOLUTION APPROVING THE SABLAYAN WATER DISTRICT'S ADVERTISEMENT PROMO FOR C.Y. 2015	04
Feb. 12, 2015	RESOLUTION ALLOTING A SUPPLEMENTAL BUDGET IN THE AMOUNT OF Php25,000.00 FOR THE PURCHASE OF 1 UNIT DESKTOP COMPUTER AND ACCESSORIES FOR OFFICE USE.	05
Feb. 12, 2015	RESOLUTION ALLOTING A SUPPLEMENTAL BUDGET FOR THE PROCURMENT OF ONE (1) UNIT 4FB1 ENGINE WITH TRANSMISSION AS SPARE ENGINE FOR ALIPID PUMPHOUSE AMOUNTING TO THIRTY ONE THOUSAND PESOS ONLY (Php 31,000.00)	06
Feb. 12, 2015	RESOLUTION ALLOTING A SUPPLEMENTAL BUDGET AMOUNTING TO SIXTY FIVE THOUSAND PESOS ONLY (Php 65,000.00) FOR THE PROCUREMENT OF ONE (1) UNIT SOUTHERN CROSS PUMP AS SPARE PUMP FOR SAN VICENTE SUB STATION.	07
Feb. 12, 2015	RESOLUTION APPROVING THE PROPOSED WATER EXTENSION PROJECT AT THE SABLAYAN GRAND TERMINAL LOCATED AT SITIO TUBURAN, POBLACION, SABLAYAN, OCCIDENTAL MINDORO AMOUNTING TO EIGHTY THOUSAND PESOS ONLY (Php 80,000.00)	08
Feb. 12, 2015	RESOLUTION REQUESTING THE SANGGUNIANG BAYAN TO INCLUDE THE INSTALLATION OF WATER CONNECTION FROM THE SABLAYAN WATER DISTRICT AS AN ADDITIONAL REQUIREMENT IN THE APPLICATION OF BUILDING PERMIT OF RESIDENTS OF SABLAYAN, OCCIDENTAL MINDORO	09
Apr. 14, 2015	RESOLUTION ADOPTING REPUBLIC ACT NO. 9184 AND ITS IMPLEMENTING RULES AND REGULATIONS.	10
Apr. 14, 2015	RESOLUTION AUTHORIZING JOSE M. ABELEDA, JR., GENERAL MANAGER OF SABLAYAN WATER DISTRICT, TO SIGN CONTRACT, ISSUE PURCHASE REQUEST, AND APPROVE PURCHASE/JOB ORDER IN THE AMOUNT OF NOT MORE THAN Php200,000.00 ONLY BOTH IN IN-HOUSE AND PROJECT PROCUREMENT.	11

Apr. 14, 2015	RESOLUTION APPROVING THE AWARD OF CONTRACT TO A.P.A. FORTUNE TRADING FOR THE SUPPLY AND DELIVERY OF VARIOUS C.I. FITTINGS (PACKAGE "B") FOR SABLAYAN WATER DISTRICT'S WATER SUPPLY SYSTEM EXPANSION PROJECT – LWUA NG 2009 PROJECT IN THE AMOUNT OF TWO HUNDRED ONE THOUSAND TWO HUNDRED SIXTEEN PESOS ONLY (Php201,216.00).	12
Apr. 14, 2015	RESOLUTION APPROVING THE AWARD OF CONTRACT TO FAIRCOM MARKETING CORPORATION FOR THE SUPPLY AND DELIVERY OF VARIOUS G.I./STEEL PIPES AND FITTINGS (PACKAGE "C") FOR SABLAYAN WATER DISTRICT'S WATER SUPPLY SYSTEM EXPANSION PROJECT - LWUA NG 2009 PROJECT IN THE AMOUNT OF THREE HUNDRED THIRTY FOUR THOUSAND FIVE HUNDRED FIFTY PESOS ONLY (Php334,550.00).	13
Apr. 14, 2015	RESOLUTION APPROVING THE AWARD OF CONTRACT TO MOLDEX PRODUCTS, INCORPORATED FOR THE SUPPLY AND DELIVERY OF VARIOUS SIZES OF U-PVC PIPES (PACKAGE "A") FOR SABLAYAN WATER DISTRICT'S WATER SUPPLY SYSTEM EXPANSION PROJECT – LWUA NG 2009 PROJECT IN THE AMOUNT OF NINE HUNDRED NINETEEN THOUSAND FIVE HUNDRED EIGHTY ONE PESOS & 76/100 (Php919,581.76).	14
Apr. 14, 2015	RESOLUTION APPROVING THE IN-KIND ASSISTANCE REQUESTED BY STO. NIÑO ELEMENTARY SCHOOL AND POBLACION ELEMENTARY SCHOOL FOR THEIR BRIGADA ESKWELA 2015 PROGRAM IN THE AMOUNT NOT MORE THAN ONE THOUSAND PESOS (Php1,000.00) EACH.	15
May 28, 2015	RESOLUTION APPROVING THE IN-KIND ASSISTANCE REQUESTED BY STO. NIÑO ELEMENTARY SCHOOL AND POBLACION ELEMENTARY SCHOOL FOR THEIR BRIGADA ESKWELA 2015 PROGRAM IN THE AMOUNT NOT MORE THAN ONE THOUSAND PESOS (Php1,000.00) EACH.	16
June 9, 2015	RESOLUTION AUTHORIZING THE ADVERTISEMENT PROMOTION OF THE SABLAYAN WATER DISTRICT FOR A PERIOD OF 30 CALENDAR DAYS STARTING JUNE 26, 2015 TO JULY 26, 2015.	17
June 25,2015	RESOLUTION ADOPTING EXECUTIVE ORDER NO. 181 SERIES OF 2015 ON THE IMPLEMENTATION OF THE PROVISIONS OF THE FY 2015 GENERAL APPROPRIATIONS ACT (GAA) ON THE GRANT OF THE FY 2015 PRODUCTIVITY ENHANCEMENT INCENTIVE (PEI) TO SABLAYAN WATER DISTRICT (SWD) REGULAR EMPLOYEES IN THE AMOUNT OF THREE HUNDRED ELEVEN THOUSAND THREE HUNDRED THIRTY FIVE PESOS ONLY (PHP 311,335.00)	18
June 25,2015	RESOLUTION APPROVING THE PAYMENT OF UNREMITTED TAXES AND	19

	PENALTY CHARGES TO THE BUREAU OF INTERNAL REVENUE (BIR) IN THE AMOUNT OF <i>SEVENTY ONE THOUSAND TWO HUNDRED FIFTY TWO PESOS AND TWO CENTAVOS ONLY</i> Php71,252.02.	
June 25,2015	RESOLUTION APPROVING THE SUPPLEMENTAL BUDGET FOR THE PURCHASE OF TWO (2) ADDITIONAL ELECTRIC FANS FOR OFFICE USED IN THE AMOUNT OF ONE THOUSAND FIVE HUNDRED PESOS (Php1,500.00) EACH ONLY.	20
July 31, 2015	RESOLUTION AUTHORIZING THE GRANT OF 2014 PERFORMANCE BASED BONUS (PBB) TO ALL SABLAYAN WATER DISTRICT (SWD) OFFICERS AND EMPLOYEES IN THE AMOUNT OF THREE HUNDRED SEVENTY THOUSAND PESOS ONLY (PHP 370,000.00)	21
July 13, 2015	RESOLUTION APPROVING THE AWARD OF CONTRACT TO KEYLARGO INDUSTRIAL SALES FOR THE SUPPLY, DELIVERY, INSTALLATION, AND COMMISSIONING OF ONE (1) UNIT 7.5 HP PUMP AND MOTOR FOR SABLAYAN WATER DISTRICT's WATER SUPPLY SYSTEM EXPANSION PROJECT - LWUA NG 2009 SUBSIDY IN THE AMOUNT OF THREE HUNDRED FIFTY TWO THOUSAND PESOS ONLY (Php352,000.00).	22
July 29, 2015	RESOLUTION APPROVING THE EXTENSION IN ZONES 1 AND III PF BRGY. IBUD, SABLAYAN, OCCIDENTAL MINDORO IN THE AMOUNT OF TWENTY SEVEN THOUSAND SIXTEEN PESOS AND SIXTY THREE CENTAVOS (PHP27,016.63) AND ONE HUNDRED SIXTY EIGHT THOUSAND SIX HUNDRED TWENTY THREE PESOS AND SEVENTY FIVE CENTAVOS ONLY (PHP168,623.75) RESPECTIVELY.	23
August 28,2015	RESOLUTION APPROVING THE APPOINTMENT OF MR. MICHAEL U. QUINATADCAN FOR THE VACANT POST OF ADMINISTRATIVE SERVICES ASSISTANT B (SG 10/1) EFFECTIVE SEPTEMBER 1, 2015.	24
August 28,2015	RESOLUTION ALLOTING A SUPPLEMENTAL BUDGET AMOUNTING TO TWENTY EIGHT THOUSAND SIX HUNDRED FORTY PESOS ONLY (PHP28,640.00) FOR THE PROCUREMENT OF ELECTRIC MOTOR 2HP (PHP18,307.00), LABOR AND MATERIALS FOR THE CONSTRUCTION OF 1 UNIT WOODEN OFFICE CABINET (PHP3,143.00) AND LABOR AND MATERIALS FOR THE CONSTRUCTION OF GATE AND FENCE OF ABACA PUMPHOUSE (PHP7,190.00)	25-A
Sept. 1,2015	RESOLUTION REQUESTING THE LOCAL WATER UTILITIES ADMINISTRATION (LWUA) FOR THE 2 ND RELEASE OF FUNDS AMOUNTING TO <i>ONE MILLION TWO HUNDRED FORTY SEVEN THOUSAND EIGHT HUNDRED NINETY THREE PESOS ONLY</i> (Php1,247,893.00) FOR THE EXPANSION OF THE WATER SUPPLY SYSTEM PROJECT UNDER THE 2009 NATIONAL GOVERNMENT – NG SUBSIDY PROGRAM OF THE SABLAYAN WATER DISTRICT FOR SOURCE DEVELOPMENT, PIPELINES AND FITTINGS, ELECTRO-MECHANICAL EQUIPMENT AND SERVICE CONNECTIONS	25-B
Sept. 11, 2015	RESOLUTION ALLOTING A SUPPLEMENTAL BUDGET FOR	26-A

	CONSULTANCY SERVICES IN THE PREPARATION OF ENVIRONMENTAL PERFORMANCE REPORT AND MANAGEMENT PLAN (EPRMP) (FOR TUBAN AND ALIPID PUMP HOUSES) AND INITIAL ENVIRONMENT EXAMINATION REPORT (IEER) (FOR TAGUMPAY PUMP HOUSE) FOR THE ISSUANCE OF ENVIRONMENTAL COMPLIANCE CERTIFICATE IN THE AMOUNT OF <i>TWO HUNDRED SIXTY THOUSAND PESOS ONLY (Php260,000.00)</i>	
Sept. 30,2015	RESOLUTION GRANTING THE REQUEST OF SABLAYAN NATIONAL COMPREHENSIVE HIGH SCHOOL SAN FRANCISCO EXTENSION IN THE AMOUNT OF <i>ONE THOUSAND PESOS ONLY (Php1,000.00)</i>	26-B
Sept. 30,2015	RESOLUTION APPROVING THE AWARD OF CONTRACT TO ERS ENTERPRISES FOR THE SUPPLY AND DELIVERY OF VARIOUS SIZES OF uPVC PIPES – SERIES 10 (PACKAGE A) FOR SABLAYAN WATER DISTRICT’S WATER SUPPLY SYSTEM EXPANSION PROJECT – LWUA NG 2009 PROJECT IN THE AMOUNT OF <i>TWO HUNDRED THIRTY EIGHT THOUSAND FIVE HUNDRED FIFTEEN PESOS ONLY (Php238,515.00).</i>	26-C
Sept. 30,2015	RESOLUTION APPROVING THE AWARD OF CONTRACT TO ERS ENTERPRISES FOR THE SUPPLY AND DELIVERY OF VARIOUS C.I. fittings (PACKAGE B) FOR SABLAYAN WATER DISTRICT’S WATER SUPPLY SYSTEM EXPANSION PROJECT – LWUA NG 2009 PROJECT IN THE AMOUNT OF <i>One HUNDRED Nine THOUSAND PESOS ONLY (Php109,000.00).</i>	26-D
Oct. 14, 2015	RESOLUTION STRESSING THE APPROVAL OF THE PURCHASE OF LOT IN BRGY. TUBAN, SABLAYAN, OCCIDENTAL MINDORO IN THE AMOUNT OF ONE HUNDRED THOUSAND PESOS ONLY (Php100,000.00).	26-E
Oct. 14, 2015	RESOLUTION APPROVING THE ADDITIONAL TEN THOUSAND PESOS (Php10,000.00) PETTY CASH FUND FOR THE DAILY OPERATIONS OF SABLAYAN WATER DISTRICT.	27
Nov. 6, 2015	RESOLUTION AUTHORIZING MS. MARLYN E. CADAPAN, ADMINISTRATIVE SERVICES CHIEF C, AS THE ALTERNATE SIGNATORY IN THE ABSENCE OF THE GENERAL MANAGER, JOSE M. ABELEDA, JR. IN ALL FINANCIAL TRANSACTIONS INCLUDING TRANSACTIONS IN LBP ACCOUNT NUMBERS: <i>3692-0000-63 (CURRENT/GENERAL FUND), 3691-0017-59 (GUARANTY DEPOSIT), 3691-0018-72 (SINKING FUND/SWD-LWUA JSA), AND 3692-1005-48 (LWUA-SWD JSA/BRGY. IBUD PROJECT FUND).</i>	28
Dec. 8,2015	RESOLUTION GRANTING THE REQUEST OF STA. LUCIA II ELEMENTARY SCHOOL IN THE AMOUNT OF <i>ONE THOUSAND PESOS ONLY (Php1,000.00)</i>	

		29
Dec. 8, 2015	RESOLUTION APPROVING THE REALIGNMENT OF BUDGET 2015 OF SABLAYAN WATER DISTRICT IN THE AMOUNT OF EIGHT HUNDRED SEVENTY THREE THOUSAND FIVE HUNDRED PESOS ONLY (PHP873,500.00).	30
Dec. 8, 2015	RESOLUTION APPROVING THE SABLAYAN WATER DISTRICT BUDGET FOR C.Y. 2016 IN THE AMOUNT OF NINETEEN MILLION FOUR HUNDRED THOUSAND SIX HUNDRED TWENTY PESOS ONLY (Php19,400,620.00).	31
Dec. 29, 2015	RESOLUTION APPROVING THE SABLAYAN WATER DISTRICT'S ADVERTISEMENT PROMO FOR C.Y. 2016	32
Dec. 29, 2015	RESOLUTION ALLOTING A SUPPLEMENTAL BUDGET FOR THE PROCUREMENT OF ONE DOZEN MONOBLOCK CHAIRS FOR OFFICE USE IN THE AMOUNT OF <i>FOUR THOUSAND EIGHT HUNDRED PESOS ONLY (Php4,800.00).</i>	33
Dec. 29, 2015	RESOLUTION ALLOTING A SUPPLEMENTAL BUDGET FOR THE REPAIR OF SOUTHERN CROSS PUMP MODEL 65X50-160 (S.N. 01G2013A13), GARBARINO PUMP EU MODEL 80-26 (S.N. E1007243), AND GARBARINO PUMP EU MODEL 80-26 (S.N. E0808441) IN THE AMOUNT OF <i>EIGHTY ONE THOUSAND PESOS ONLY (Php81,000.00).</i>	34
Dec. 29, 2015	RESOLUTION ALLOTING A SUPPLEMENTAL BUDGET FOR THE DEVELOPMENT OF NEW WATER SOURCE IN BRGY. LIGAYA, SABLAYAN, OCCIDENTAL MINDORO IN THE AMOUNT OF <i>THREE HUNDRED THOUSAND PESOS ONLY (Php300,000.00).</i>	35
Dec. 29, 2015	RESOLUTION REQUESTING THE RELEASE OF PRICE AND PHYSICAL CONTINGENCIES IN THE AMOUNT OF <i>TWO HUNDRED NINETY FOUR THOUSAND NINE HUNDRED EIGHTY FIVE PESOS (Php294,985.00)</i> (AS PER APPROVED PROGRAM OF WORK OF SEVEN MILLION (Php7,000,000.00) LOAN UNDER LWUA NG 2009 SUBSIDY) AND THE REALIGNMENT OF THE REMAINING FUND AMOUNTING TO <i>TWO MILLION NINE HUNDRED FORTY NINE THOUSAND FIVE HUNDRED ELEVEN PESOS AND TWENTY NINE CENTAVOS (Php2,949,511.29)</i> FROM THE FINANCIAL ASSISTANCE GRANTED BY THE LOCAL WATER UTILITIES ADMINISTRATION FOR BRGY. IBUD IMPROVEMENT AND EXPANSION PROJECT UNDER LOAN ACCOUNT NO. 4-2693.	36

E. LIST OF REPORTS PREPARED REGULARLY (MONTHLY)

1. Balance Sheet
2. Statement of Income
3. Cash Flow Statements
4. Monthly Data Sheet
5. Trial Balance
6. Cash Receipts Register
7. General/Subsidiary Ledger
8. Journal Voucher
9. Bank Reconciliation Statement
10. Report of Checks Issued
11. Check Voucher
12. Working Fund Voucher
13. Billing Register
14. Power & Fuel Consumption
15. Production Report in cubic meter
16. Non Revenue Water; Unaccounted Water
17. Chlorine Residual Summary

F. FINANCIAL STATEMENTS (*See Excel and Word format of F. Financial Report 2015 Folder*)

1. Balance Sheet
2. Statement of Income
3. Composition of Cash and Cash in Bank
4. Statement of Changes in Equity
5. Cash Flow Statement
6. Trial Balance
7. Comparative Balance Sheet (2014-2015)
8. Comparative Income Statement (2014-2015)
9. Comparative Cash Flow Report (2014-2015)
10. Comparative Statement of Changes in Equity (2014-2015)
11. Notes to Financial Statements

G. SUMMARY OF LOAN PAYMENTS TO LWUA

MONTH		REGULAR LOAN
JANUARY	Php	30,346.00
FEBRUARY		30,346.00
MARCH		30,346.00
APRIL		30,346.00
MAY		30,346.00
JUNE		30,263.00
JULY		30,263.00
AUGUST		30,263.00
SEPTEMBER		29,848.00
OCTOBER		30,263.00
NOVEMBER		30,263.00
DECEMBER		30,266.00
TOTAL	Php	364,159.41

H. WATER RATES

Category	Meter Size	Minimum	Commodity Charge per cubic meter			
			11-20	21-30	31-40	41-up
Residential/Gov't.	½"	208.00	23.00	25.50	27.50	29.50
Commercial (x2)	½"	416.00	46.00	51.00	55.00	59.00
Semi-Commercial-A(x1.75)	½"	364.00	40.25	44.63	48.13	51.63
Semi-Commercial-B(x1.5)	½"	312.00	34.50	38.25	41.25	44.25
Semi-Commercial-B(x1.25)	½"	260.00	28.75	31.88	34.38	36.88

I. SUMMARY OF WATER PRODUCTION AND CONSUMPTION 2015

MONTH	WATER PRODUCTION (CU.M.)	CONSUMPTION (CU.M.)
JAN	69,319.498	54,594
FEB	61,085.109	52,300
MAR	68,518.040	51,635
APR	64,122.506	64,607
MAY	65,115.723	58,707
JUN	59,593.047	55,275
JUL	66,191.777	58,831
AUG	65,441.535	58,086
SEP	65,291.793	55,144
OCT	67,640.630	59,042
NOV	68,177.119	60,776
DEC	66,552.735	60,800
Total	787,049.51	689,797

NAME OF WELL	LOCATION	TOTAL RATED CAPACITY
a. Abaca	Sto. Niño, Sablayan, Occ. Mindoro	20 LPS
b. Beta #1	Buenavista, Sablayan, Occ. Mindoro	12 LPS
c. Beta #2	Buenavista, Sablayan, Occ. Mindoro	7 LPS
d. Delta	Linava Sablayan, Occ. Mindoro	12 LPS
J. WATER SOURCES	Sablayan, Occ. Mindoro	7 LPS
f. Sigma	San vicente, Sablayan, Occ. Mindoro	10 LPS
g. Alipid	Santo Niño, Sablayan, Occ. Mdo.	20 LPS

K. SERVICE CONNECTION GROWTH

MONTH	NUMBER OF NEW CONNECTION
JAN	23
FEB	14
MAR	40
APR	44
MAY	25
JUN	19
JUL	41
AUG	40
SEP	17
OCT	30
NOV	28
DEC	<u>32</u>
Total	<u>353</u>

L. LIST OF MAJOR EQUIPMENTS

Item	Qty.	Unit	Particulars	Total Amount
1	7	Units	4 FB1 Isuzu Engine	175,000.00
2	3	Units	Electric Motor 2hp. (Baldor Brand)	33,900.00
3	2	Units	Electric Motor 3 phase 20 hp (VEM Brand)	88,000.00
4	1	unit	Electric motor 3 phase 15 hp (VEM Brand)	44,000.00
5	4	Units	Southern Cross Ø 50mm centrifugal pump	277,172.00
6	3	Units	Garbarino centrifugal pump Ø100mm	127,908.00
7	2	Units	Cummins Genset 3 phase, 220 V 50 KVA	850,000.00
8	1	Unit	Submersible Pump 3 phase, Ø100mm 20hp Franklin Br.	247,001.00
9	1	Unit	4DR5 Engine Built in Generator 10 KVA	42,000.00
10	1	Unit	Chorinator Series 150	28,000.00
11	7	Units	Chorinator Series 100	142,905.00
12	1	Unit	Concrete cutter Ø40cm	30,500.00
13	1	Unit	Pipe cutter # 100mm	24,970.00
14	6	Units	Transformer 15 KVA	312,070.02
15	4	Units	Transformer 37.5 KVA	277,000.00
16	1	Unit	Transformer 25 KVA	27,000.00
17	1440	meters	Transmission Wire 50mm ²	204,259.85
18	9	Units	Flow Meter (Elster brand) Ø 100 mm	304,031.00
19	2	Units	Pipe wrench 90cm	76,000.00
20	2	Units	CCTV Camera with monitor 360cm	18,280.00
21	1	Unit	Radio base Icom IC 2100	23,024.00
22	13	Units	Hand held radio Icom V8	60,300.00
23	1	unit	Burglar Alarm	10,976.00
24	11	units	Computer set	211,790.00
25	1	Unit	Motorcycle 125cc Kawasaki Brand	63,840.00
26	1	unit	Motorcycle 125cc Kawasaki Brand	59,000.00
27	1	Unit	Motorcycle 100cc Kawasaki Brand	51,940.00
28	1	Unit	With Sidecar Motorcycle 125cc Kawasaki Brand	74,051.00
29	1	Unit	Motorcycle 125cc Kawasaki Brand	58,000.00
30	1	Unit	Motorcycle 125cc Kawasaki Brand	46,000.00
31	1	Unit	Motorcycle 125cc Kawasaki Brand	50,000.00
32	4	units	Weirwei VEV Radio (Handheld)	10,000.00
33	1	unit	Generator Diesel Engine 18.50 KVA	370,000.00
34	1	unit	Hydraulic Pipe Bender (12 ton) ½-2	10,300.00
35	1	unit	Electric Jack hammer (Makita Brand)	47,265.00
36	1	unit	Denyo Welding machine; Model:GQW-180SS 30KVA	52,675.00
Total				Php 4,546,857.87

M. SUMMARY OF BACTERIOLOGICAL ANALYSIS

MONTH	SAMPLE TAKEN	NUMBER OF NEGATIVE RESULT	NUMBER OF POSITIVE RESULT
JAN	5	5	0
FEB	5	5	0
MAR	6	6	0
APR	6	6	0
MAY	6	6	0
JUN	6	6	0
JUL	6	6	0
AUG	5	5	0
SEP	5	5	0
OCT	5	5	0
NOV	5	5	0
DEC	5	5	0
TOTAL	65	65	0

N. MONTHLY DATA SHEET (YTD) *(See N. Monthly Data Sheet 2015- Excel Format)*

SABLAYAN WATER DISTRICT

ANNUAL REPORT

For the Period January 1, 2015 to December 31, 2015

I. GENERAL

A. ADMINISTRATIVE

- 1. Attached approved organizational charts in effect as year's end.
 - a. Functional Chart /
 - b. Position/Organizational Chart (Key employees only) - showing Permanent positions and incumbents /

- 2. Attach list of employed personnel with pertinent information.
(List of Plantilla of Personnel for the Fiscal Year 2014) /

The following summarizes the District's staffing
 - a. Total number of employees 42
 - b. Number of permanent employees 19
 - c. Number of casual/temporary employees/laborers 23
 - d. Number of employees meeting minimum qualifications per Job Description adopted by the District 19
 - e. Number of employees not classified as casual/temporary who do not meet the minimum qualifications established by the District n/a

- 3. Has the District adopted a policy prohibiting hiring of personnel related up to the *fourth degree* by affinity or consanguinity? (Yes or No) Yes, CSC Rules

If not, how many of the employees are related to other employees of officials with the fourth degree by *affinity of consanguinity* ? n/a

- 4. Has the District adopted rules and regulation Yes
 - a. Peronnel Matters /
 - b. Utility Customer Relations /
 - c. General Utility Operations /
During the year, in how many instances (or how many times) have exemption to theses rules and regulations has been in special cases? n/a

- 5. Attach list of policy - setting resolutions adopted, repealed or amended by the District Board including those adopting LWUA guidelines (Summary of Policy - Setting Resolutions) /

- 6. Has the District written and properly updated, reliable records of the following? (A field check may be undertaken, if necessary? Yes or no)
 - a. Customer Complaints /
 - b. Billing and Collection /
 - c. Delinquencies in Payment of Water Bills /
 - d. Meter Histories /
 - e. Service Connections /
 - f. Equipment Histories /
 - g. Equipment Downtime /

h. Bacteriological Tests	/
i. System Pressure	/
j. Leak Reports	/
k. Unaccounted for Water	/
l. Pump Effeciencies	/
m. Water Production	/
n. Water Production	/
o. Valve and pipeline location	/
p. General Accounting	/
q. Stock Inventory	/
r. Stores Usage	/
s. Employees Record	/
t. Minutes and Board Meetings	/

7. For this year, Auditing has been done by the Commission on Audit Yes

B. FINANCIAL/COMMERCIAL

1. Attach the District's financial statements for the report year including a comparison of the immediate past year. Annex F

2. For the year under report, the District's total *budgetary outlay* was broken down into:
(Source: Approved Budget)

a. Operating Outlay	Php 16,499,007.00
b. Capital Outlay	Php 605,738.00.00
c. Special budgets, if any (<i>additional budget</i>)-Contingency	Php 7,720,479.00
d. Debt Service	Php 1,620,541.00
e. Reserve	Php 576,291.00
f. Replenishment (JSA)	Php 1,122,214.00
g. Materials Inventory	Php 869,397.00
h. Auditor's Fee	Php 100,000.00

3. For this same *one-year* period, the District's Gross Revenue was broken down into:
(Source: Financial Report)

a. Collection from water sales	Php 17,916,062.50
b. Other water revenues	-
c. Other non-operating income	Php 9,223,938.44

4. For this same *one-year* period, the District's expenditures was broken down into:
(Source: Financial Report)

a. Operational (operation & maintenance expenses, including depreciation)	Php 14,569,272.42
b. Capital Outlay	Php 5,508,704.11
c. Annual Debt Servicing (Annex G - Summary of Loan Payments to LWUA)	Annex G

5. For this same *one-year* period, the total salaries, wages & other emoluments paid for the District's employees where broken down into:

a. For permanent employees	Php 3,790,806.00
b. For casual/temporary	Php 1,460,912.00

6. Expenses for power/fuel for pumping during the year Php 1,856,757.27

7. Total amount <i>billed</i> during the year is broken down into:	Php 18,304,799.58
a. Total Billings (Current and Old Accounts)	Php 17,803,453.28
b. Old Accounts	Php 501,346.30
8. Total amount <i>collected</i> (<i>water sales only</i>) during the year is broken down into:	Php 17,915,862.70
a. Current Billings	Php 9,351,419.13
b. Arrears	Php 8,564,443.57
9. Total amount uncollected (delinquent) at year's end excluding Bad Debts	Php 241,844.50
10. Total reserves at year's end	Php 3,692,839.90
11. Complaints filed, processed and settled during the year	
a. Total number filed, processed and settled during the year	375
b. Number dismissed for lack of merit/withdrawn	0
c. Number investigated	375
d. Number settled to the satisfaction of complaints	375
e. Number elevated to the District Board of Directors	0
f. Number settled by the Board	0
g. Number elevated to the higher authorities	0
12. At year's end, the following water charges were in force: (Annex H-Approved Water Rates Schedule)	Annex H
Had these rates been submitted to LWUA for review? (Yes or No)	Yes

C. TECHNICAL

1. Has the District adopted by Board Resolutions, a set of design and construction standard? (Yes or No)	Yes
If so, who prepared it?	Management
Is it being adhered to strictly?	Yes
2. Does the District undertake bacteriological test of its water? (Yes or No)	Yes
How often are these test made per year?	Once a month
Is LWUA being furnished copies of these test reports? (Yes or No)	Yes
For the report year, how many such reports were submitted to LWUA?	12
3. State the method of water treatment employed by the District, if any	Chlorination
4. Does the District undertake regular pump efficiency test? (Yes or No)	Yes
How many of these pumps does the District have in its system?	6
How many of these pumps are operational?	6

D. OPERATIONAL

1. Total water production during the year in cubic metres (Annex I-Summary of Water Production and Consumption)	Annex I
Total water billed in cubic meters	695,871 cu.m.
Average per capita consumption in lpd	0.13
2. Attach list of Water Sources (Annex J-WD Water Sources)	Annex J

3. Is the District provided with measuring devices to measure their water production? (Yes or No) If yes, what type? If not, how do you measure productions	<u>Yes</u> <u>Production Meter</u> <u>n/a</u>
4. As of year's end, the District has the following existing service connection and related information. (Annex K-Service Connection Growth)	<u>Annex K</u>
a. Total number of existing connections (Active & Inactive Connection)	<u>4,016</u>
b. Number of Active Connections	<u>3,279</u>
c. Number of Metered Connections	<u>3,279</u>
1. With functioning meters	<u>3,309</u>
2. With non-functioning meters	<u>737</u>
d. Number of flat rate connections	<u>-</u>
e. Number of connections regularly billed	<u>3,309</u>
f. Number of delinquent concessionaires	<u></u>
g. Average number of customers per connections (HH)	<u>5</u>
5. Estimated population of district service areas	<u>80,741</u>
a. Estimated population served by utility whether fully or partially	<u>15,190</u>
6. Because of inadequate facilities, the District had to provide partial service in accordance with the following average length of time each 24-hours day:	
a. Less than 6 hours service	<u>n/a</u>
b. 7-12 hours service	<u>n/a</u>
c. 13-18 hours service	<u>n/a</u>
d. 19-24 hours service	<u>/</u>
(Not: You may vary the number of hours as may be necessary to suit actual conditions)	
7. Attach list of major equipment and machinery (with an initial cost of at least P 10,000.00 including pertinent information). (Annex L-List of Major Equipments)	<u>Annex L</u>
8. Does the District keep written record of request for service? (Yes or No)	<u>Yes</u>
a. Does the record show the date when such requests were made and the nature of the service requested (Yes or No)	<u>Yes</u>
b. On the average, how long (in days) does it take the District to respond and attend such requests?	<u>2 days</u>
c. How many such reports were received during the year?	<u>320</u>
d. How many of these reports attended to during the year?	<u>320</u>

Submitted by:

JOSE M. ABELEDA, JR.
General Manager

SABLAYAN WATER DISTRICT

ANNUAL REPORT

For the Period January 1,2015 to December 31, 2015

II. PROFILE

1. THE WATER DISTRICT & ITS PHYSICAL SYSTEM'S FACILITIES

A. ORGANIZATION

1. Date Formed	<u>November 17,1981</u>	Age (months) as of 12/31/14	<u>409 months old</u>
2. Date CCC was issued	<u>May 19, 1982</u>	CCC No.	<u>197</u>
3. Personnel	<u>43 (19 Regular, 23 JO)</u>		

Comments: (adequacy, qualification, performance & others)

B. EXISTING SYSTEM'S FACILITIES

1. Service

1.1 Service Area	<u>Sablayan</u>
1.2 Population of Service Area (Latest)	<u>80,741</u>
1.3 No. of Households	<u>16,545</u>
1.4 No. of Persons/Household	<u>5</u>
1.5 Service Time (hrs./day)	<u>24 hours/day</u>

2. Structure and Equipment

2.1 Administration Building

Office Area	<u>398 sq.m.</u>
Office Equipment (see List of Major Equipments)	<u>Annex L</u>

2.2 If rented, how much per month? n/a

2.3 Type of Water Source Deep Well and Shallow Well

Rated Capacity per day (cu.m. / day) See narrative existing system facility

2.4 Reservoir (description, built, dimension and capacity) See narrative existing system facility

2.5 Water Sources (Annex J-WD Water Sources)

2.6 Service Connections

Type	Flat	Metered	Total
Residential Government	0	3220	3220
Commercial	0	89	89
Bulk	0	0	0
Total	0	3309	3309

2.7 Production

Average Monthly Production	
a. Booster/Pumping (cu.m)	<u>66,312.93 cu.m.</u>
b. Bulk Water (cu.m)	<u>0</u>

Production Efficiency % (average/month) (Total Water Utilized/Total Production)	87.44%
NRW % (_____) YTD	12.55%

2. CURRENT OPERATION / FINANCIAL HIGHLIGHTS

A. Existing Water Rates (Annex H-Water Rates Schedule) Annex H

B. Operating Income/Expenses

Average Water Sales (average/mo)	Php 1,431,539.84
Average Collection (average/mo)	Php 1,492,988.56
Average Expenses-O & M for the year (average/mo)	Php 1,214,106.04

C. Financial Highlights (rate & status)

Current Ratio	=	$\frac{\text{Current Assets}}{\text{Current Liabilities}}$	4.16
Long Term Debt/Equity Ratio			2.31
Monthly Biling (average/mo)			Php 1,483,621.10
Collection Efficiency-% of On-Time Payment (YTD)			103.96%

3. COMMUNITY ECONOMIC PROFILE

A. Total Population (covered by the Water District) 38,019

B. Average Monthly Family Income in the Area Php 4,600.00

C. Major Source of Income Farming and Fishing

D. Average Monthly Family Expenditure in the Area No available data from LGU

E. City/Municipal Revenue (CY 2015) No available data from LGU

F. Average Rate of Mortality per 100,000 population due to waterborne diseases (e.g. diarrhea) 0

G. Average Rate of Morbidity per 100,000 population due to waterborne diseases (e.g. diarrhea) 0

H. Major Agricultural, Industrial and Commercial activities
Palay/Corn/Squash Production, Carabao/Cattle/Swine/Goat/Chicken Production; Concrete Aggregates

4. OTHER INFORMATION

- The District has implemented the Meter Clustering System to help alleviate water pilferage
- The District has regularly monitors the Residual Chlorine in various strategic points of its water supply system
- The District has maintained its established safety programs and standard operating procedure
- The District has continued implementing the 5% discount for water bill of Senior Citizens
- The District has approved the Gender and Development Budget for CY 2014 in compliance with RA 9710
- The District has adopted and implemented the approved Strategic Performance Management System (SPMS)
- The District has religiously paid the principal and interest of its various loans to LWUA

Prepared by:

Approved by:

MARLYN E. CADAPAN

Admin. Serv. Chief C

JOSE M. ABELEDA, JR.

General Manager

